

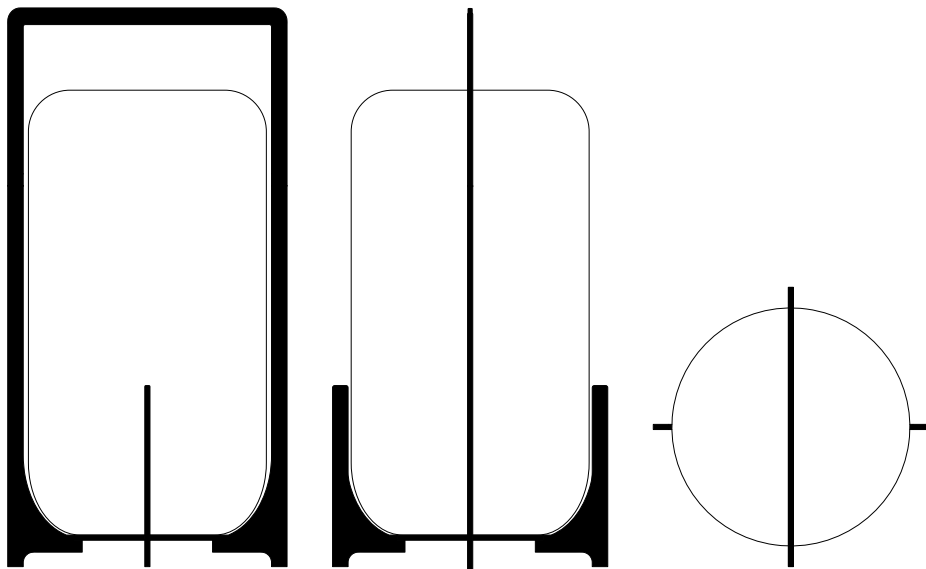
# WARLI

# TWILIGHT

PAOLO ZANI



The outdoor lantern enters the house and by a fine grey canvas cable it plugs to the power. In addition to the stainless steel finish, it is enriched with new satin colours with a corrugated effect: dark bronze, light grey, white and burgundy.



## TWILIGHT Indoor lantern L

Dimensions : 27 x h. 54 cm.

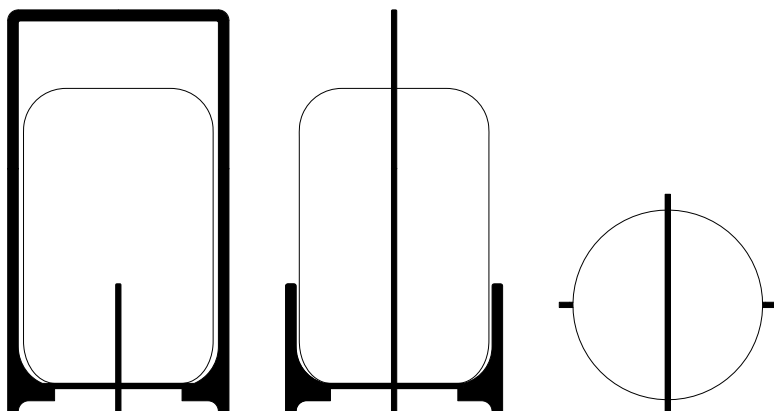
Glass : Ø 23 x h. 43 cm.

Light :

led GX-53, 3000 K, 15 W / 220-240v

plug 2.5A 2P

switch 2A 250v



## TWILIGHT Indoor lantern M

Dimensions : 21 x h. 38 cm.

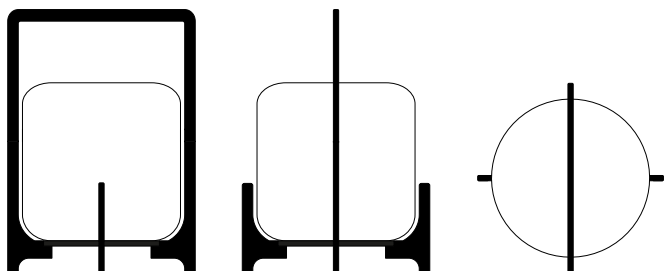
Glass : Ø 18 x h. 28 cm.

Light :

led GX-53, 3000 K, 7 W / 220-240v

plug 2.5A 2P

switch 2A 250v



## TWILIGHT Indoor lantern S

Dimensions : 18 x h. 25 cm.

Glass : Ø 15 x h. 15 cm.

Light :

led GX-53, 3000 K, 5 W / 220-240v

plug 2.5A 2P

switch 2A 250v